

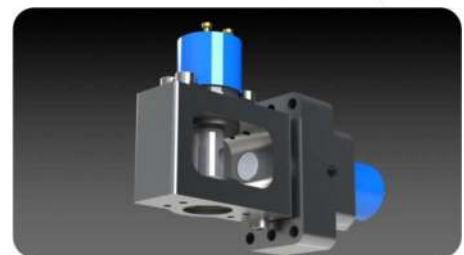
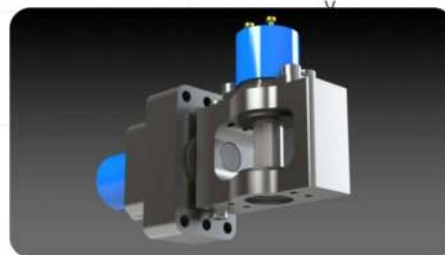
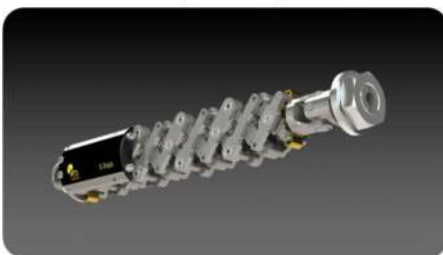
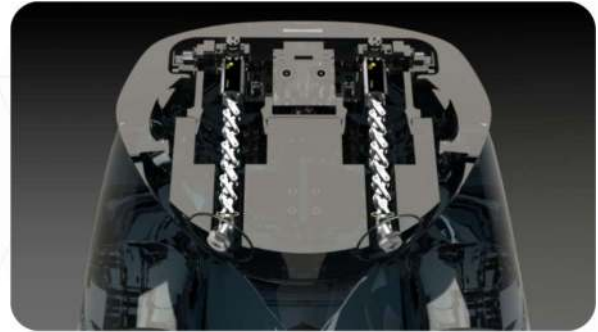


**EUROAMERICA**  
TEST AND MEASUREMENT SOLUTIONS

## THOR-50M Abdomen

The THOR-50M Abdomen is equipped with (2) 123mm displacement S-Track sensors. The features of these S-Track's are comparable to NHTSA Drawing No. SA572-S121 Rev. A.

- Total mechanical travel: 123 mm
- Total measuring range: 123 mm
- Pre/Post travel: 0 mm
- Operating velocity: max. 20 m/s
- Operating temperature: 10°C to 30°C
- Independent linearity:  $< \pm 1\%$
- Mass: 155 g  $\pm$  5 g (less cables)
- Hysteresis:  $< 1\%$
- Repeatability:  $< 0.1$  mm
- Shock resistance: 200 g



In addition to the S-Track, also available are the THOR-50M 3D-Brackets (Abdomen Right and Abdomen Left). The Abdomen Right Bracket is comparable to Part No. 472-4740-2, while the Abdomen Left Bracket is comparable to Part No. 472-4740-1.

**To acquire a demo unit, please contact Austin Kelly at:**

**[austin.kelly@euroamerica-llc.com](mailto:austin.kelly@euroamerica-llc.com) or (937) 407-7572**