



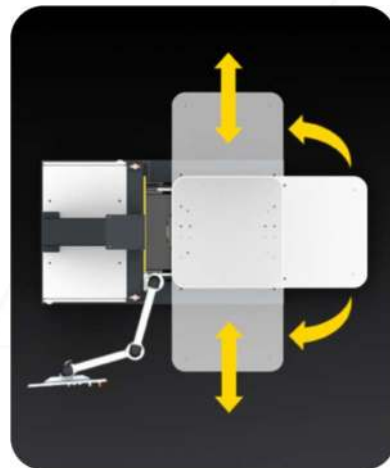
**EUROAMERICA**  
TEST AND MEASUREMENT SOLUTIONS

## ATD-LabTech Test Bench

The automated Test Bench allows for operation and adjustment along four axes, creating high flexibility in relation to the significant number of dummy types and diverse testing scenarios. The easy and precise positioning can be done at the self-explanatory input module of the touch-panel monitor.



v



This system includes the handling of all coming ATD types and testing scenarios. The functionality of the test bench reveals various scopes of operation beyond the certification of dummies.

[www.euroamerica-llc.com](http://www.euroamerica-llc.com) | (937) 407-7572